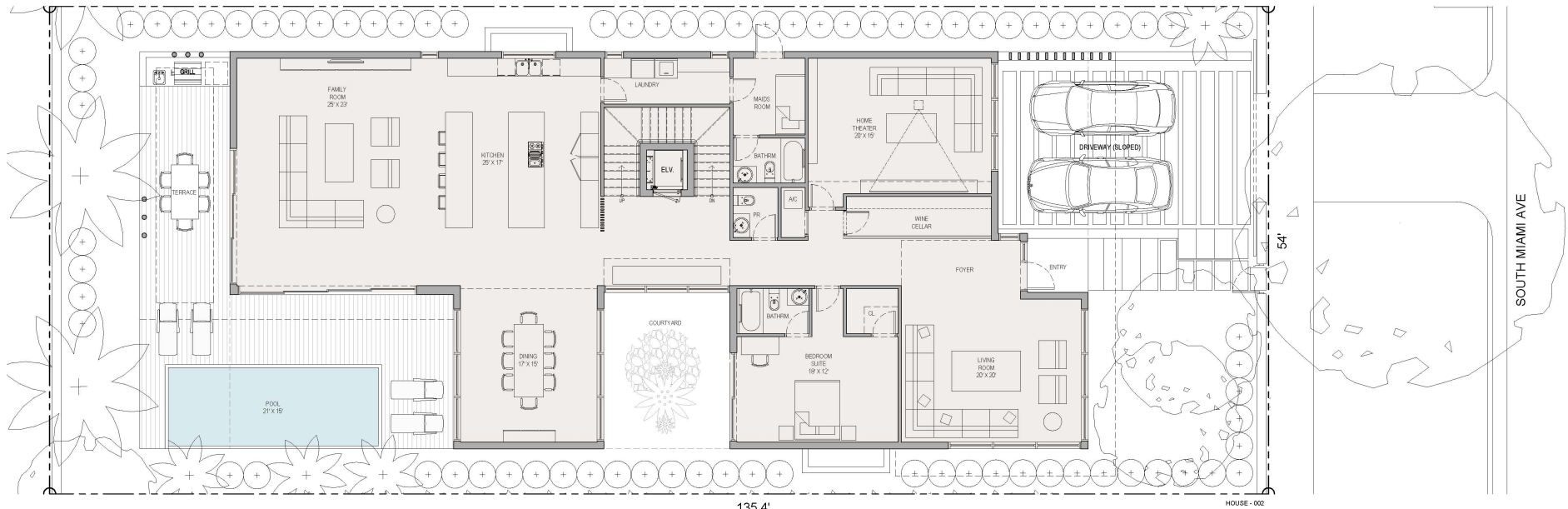


135.4'

HOUSE - 002

HOUSE-02
 5 BEDROOM, 5.5 BATHROOMS
 BASEMENT: 2,109 SF
 FIRST FLOOR: 3,272 SF SF A/C
 SECOND FLOOR: 2,335 SF SF A/C
 TOTAL: 7,716 SF
 ROOF TERRACE: 1,822 SF
 TOTAL: 9,538 SF

architects **borges+**
 associates

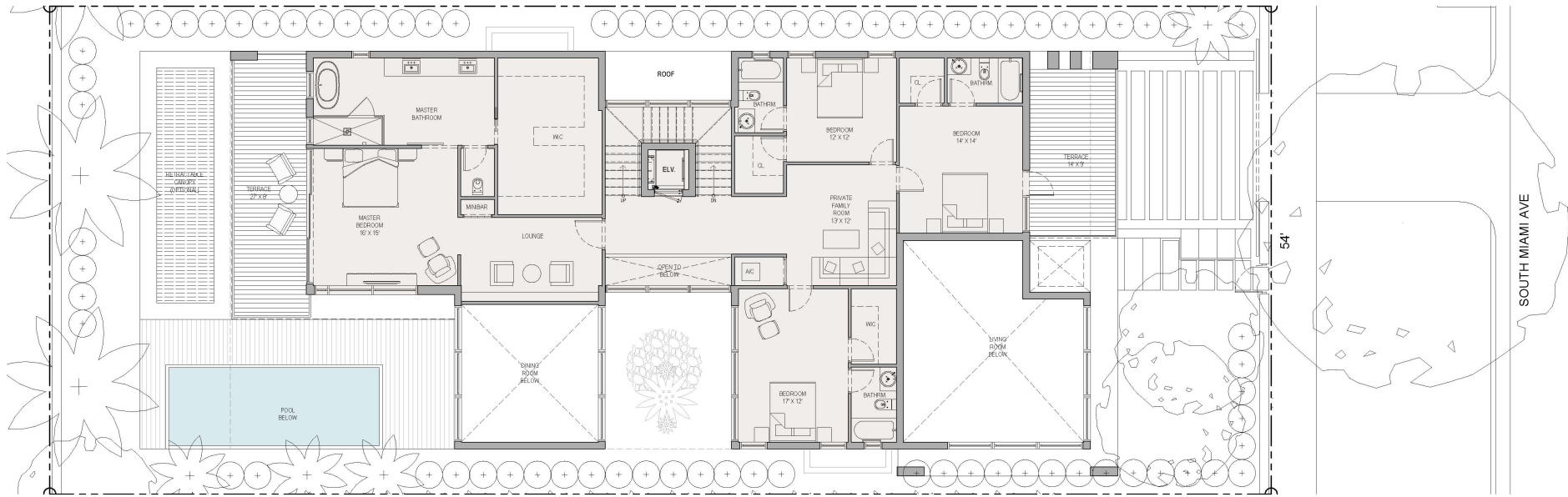


135,4

HOUSE - 002

HOUSE-02
 5 BEDROOM, 5.5 BATHROOMS
 BASEMENT: 2,109 SF
 FIRST FLOOR: 3,272 SF SF A/C
 SECOND FLOOR: 2,335 SF SF A/C
 TOTAL: 7,716 SF
 ROOF TERRACE: 1,822 SF
 TOTAL: 9,538 SF

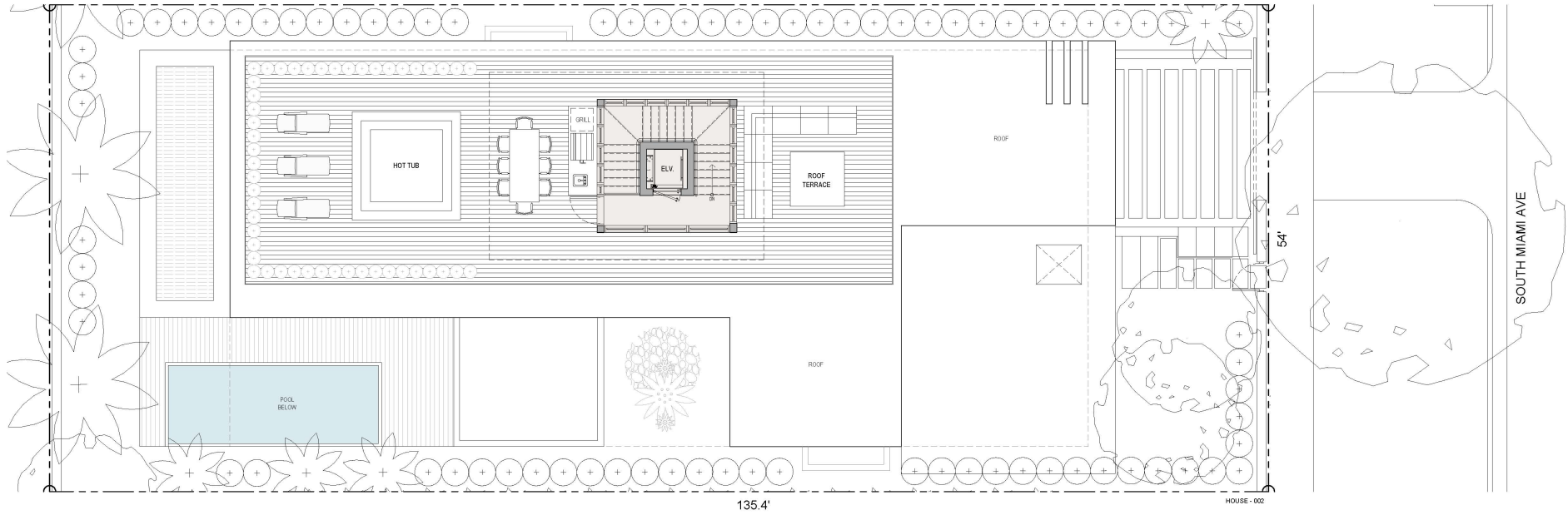
architects **borges+**
 associates



135.4

HOUSE - 002

HOUSE-02
 5 BEDROOM, 5.5 BATHROOMS
 BASEMENT: 2,109 SF
 FIRST FLOOR: 3,272 SF SF A/C
 SECOND FLOOR: 2,335 SF SF A/C
 TOTAL: 7,716 SF
 ROOF TERRACE: 1,822 SF
 TOTAL: 9,538 SF



135.4'

HOUSE - 002

HOUSE-02
 5 BEDROOM, 5.5 BATHROOMS
 BASEMENT: 2,109 SF
 FIRST FLOOR: 3,272 SF SF A/C
 SECOND FLOOR: 2,335 SF SF A/C
 TOTAL: 7,716 SF
 ROOF TERRACE: 1,822 SF
 TOTAL: 9,538 SF

architects **borges+**
 associates